



COAST PROPERTY GROUP
FAR SOUTH COAST



510 Sapphire Coast Drive Tura Beach NSW

4 2 2

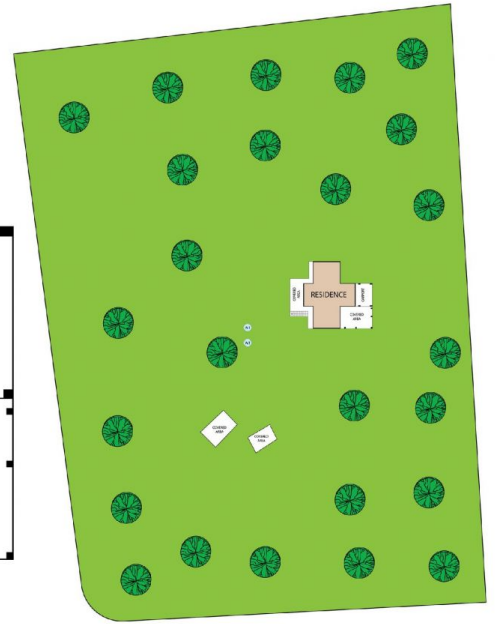
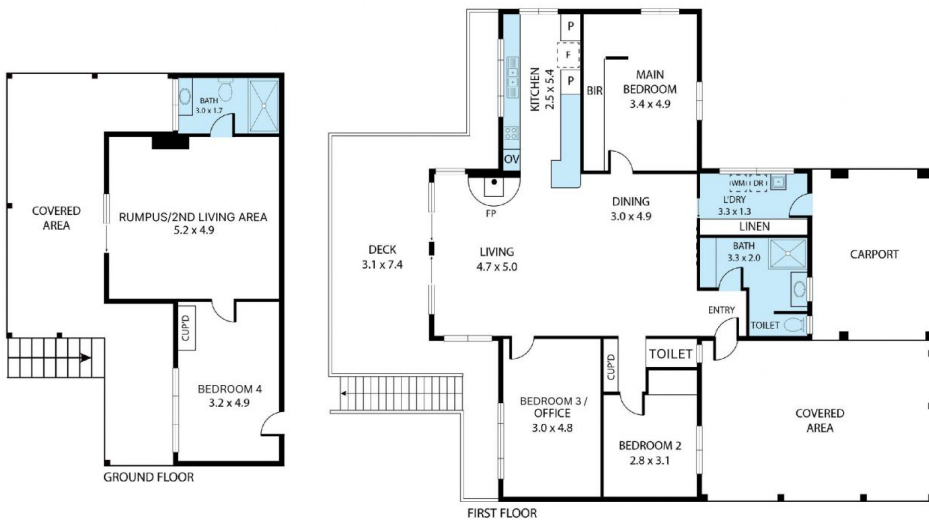
Peacefully and quietly positioned off Sapphire Coast Drive, in amongst bushland yet only minutes to the beach and Tura Beach amenities, this well-maintained and much-loved residence "ARAUCARIA" offers timeless style and quality on a generous 5-acre block which is an "ABSOLUTE" rare opportunity.

Built in the early 1980's this residence is embraced by beautiful gardens, including deciduous and fruit trees, a small dam with a pump, irrigation with taps throughout the property, a chook shed, and a garden shed, with plenty of space for children to play. Close to the house, within a natural circle clearing, a majestic Bunya Pine (*Araucaria Bidwillii*) provides a dramatic backdrop for firepit gatherings and for the nature lover, it is Paradise Found because the company it keeps includes the Powerful Owl, the Gang Gang Cockatoo and all the wild characters you would

Price : \$1,850,000 Price Guide
Land Size : 2 ha
View : <https://www.coastpropertygroup.com.au/sale/nsw/far-south-coast/tura-beach/residential/house/7943791>



Tammy Carroll
02 6495 8410



510 Sapphire Coast Drive, Tura Beach 2548

TOTAL APPROX. FLOOR AREA 161 SQ.M

Whilst every attempt has been made to ensure the accuracy of the floor plan contained here, measurements of doors, windows, rooms and any other items are approximate and no responsibility is taken for any error, omission, or misstatement. This plan is for illustrative purposes only and should be used as such by any prospective purchaser.

